

ARCHIVES GAZETTE



City of Seattle
Seattle Municipal Archives

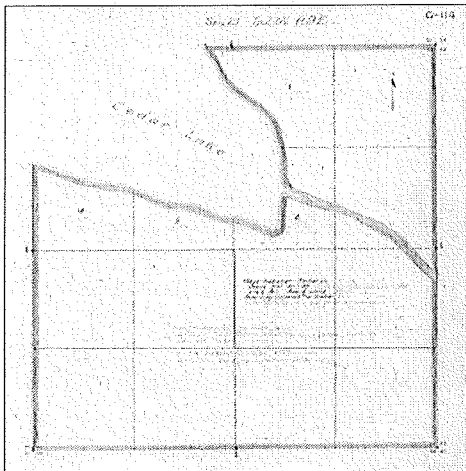
Number 14 Winter 2003

Office of the City Clerk
Legislative Department

Historical Maps Database

The Seattle Municipal Archives has just completed the cataloging and indexing of over 800 historical maps. The project, funded in part with a grant from the Cultural Development Authority of King County, enhances access to the maps through the use of an online index that resides on both the Archives and the Seattle City Clerk's websites. The maps date from the 1890s to the 1990s and document the physical development and infrastructure of Seattle including: transportation, urban planning, zoning, parks, the water system, shorelines, sewers and drainage, and general city-wide mapping.

The grant enabled staff to develop priorities for processing the maps and to create standards for cataloging, indexing and scanning. Project staff organized the maps with the highest research potential and gave them priority for the project. Maps in the highest priority categories included: neighborhood maps, annexation and political maps, transportation (including bicycle maps) zoning and land use (including Comprehensive Plan) maps, parks and recreation, and Cedar River Watershed maps.



Item 222
Title: [Sec 21 T22 R9 Land acquisition and agreements at Cedar Lake in Cedar River Watershed project]
Base date: 1900
Date of last change: Aug. 23, 1911
Context: From SPU Cedar River Water-

shed Atlas; See index map for related items.

Over 400 entries in the map database are accompanied by digital images including images for zoning maps for 1923, 1947 and 1973. The zoning maps are among the most frequently requested land use maps in the Archives, staff expects high use of these maps. Many more maps

remain in the Archives to be added to the database. Establishment of the map database and creation of best practices are key steps to what will be an ongoing effort of providing access to maps in the Archives' holdings.

History Day Resources

The Seattle Municipal Archives will mount a link to a few suggested topics for 2004 History Day. Many subjects found in City records are relevant to this year's History Day theme, "Exploration, Encounter, Exchange."

Some topics pertinent to the theme this year include: the Initiative process, strategies to address homelessness, the Seattle Model City Program and citizen participation, and the Bogue Plan's proposed civic center. Interested students should contact the archivists to discuss topics and sources.

100 Years Ago

The Health Department Minutes from 1903 reveal that major health concerns in the City included the bubonic plague in California, the location of stables, the inspection of meat and milk, the quality of water, and the collection of dead animals.

On September 3, 1903 the board held a special meeting to make arrangements for checking students in the public schools. It was moved that "an inspection of all the Public Schools be made beginning Monday next September 7. That the Schools be divided into Districts and members of the Board of Health and the Health officers make examination of all the pupils with reference to any contagious disease especially Scarlet Fever..."

*Board of Health Minutes, Vol. 1, p. 305
Records Series 3200-01*

Annexed Cities Records

The Seattle Municipal Archives holds records of cities annexed to Seattle between 1905 and 1910. Seattle annexed eight small municipalities, nearly doubling the City's physical size. These included: Ballard, Columbia, Georgetown, Ravenna, South Park, South Seattle, South

Seattle, Southeast Seattle, and West Seattle.

Council Minutes, Ordinances, and Clerk Files exist for Ballard, Columbia, Georgetown, South Park, Southeast Seattle, and West Seattle. The City Clerk's Files for Ballard contain records relating to elections, activities of the West Coast Improvement Company, and a city census for 1890.

Other records for the early annexed cities include: Annexation Documents (1802-A1), comprised of petitions for annexation, incorporation certifications, and reports and proposed consolidation of services, Financial Statements (1803-03), and Local Improvement District Files (2602-03) which were completed by the City's Engineering Department after the annexations.

Of note in the Clerk's Office is the addition of online indexes to the ordinances of the cities of Ballard, Georgetown, and West Seattle. The indexes will be available soon on the Archives web page. Ballard Ordinances date from 1890 to 1907, Georgetown from 1904 to 1910, and West Seattle from 1902 to 1907. The Annexed Cities Ordinances are not subject indexed but ordinance titles are searchable full text. The ordinances themselves are available for use in hard copy through the Seattle Municipal Archives in the Seattle City Clerk's Office. Indexes to ordinances of the cities of Columbia, Southeast Seattle and South Park will be available online sometime soon.

The Archives also holds records concerning annexations to the City during the 1940s and 1950s. These records relate to: Arbor Heights, Ballard Tidelands, Blue Ridge, Lake Ridge, Maple Leaf, Northgate, Roxbury, Sand Point, and West Seattle.

Newly Processed: Utility Franchises

Dating from 1909 to 1985, the Utility Franchise records (2823-02) contain information on the granting and maintenance of franchises granted for use of City streets, sidewalks, bridges or air space. Franchises could be for tunnels, gasoline tanks, or skybridges. Measuring 7.6 cubic feet, the bulk of the records consist of correspondence with the City's Engineering Department and the grantee of the franchise. Many maps and drawings are included as well.

Most often the grantees are businesses, such as the Bon Marche, Pacific Telephone and Telegraph Company, or Seattle Gas Company. Correspondence also exists between other City agencies, such as City Light, the Water Department and the Board of Public Works. Utility franchise records also relate to large projects such as the I-5 freeway and the monorail.

Information not directly related to franchise data provides information about the City, businesses, and about changing technology. The franchise records relating to steam railroads, for example, include information on the state of Railroad Avenue, World War I related data and include correspondence between Great Northern Railroad and City relating to the construction of the tunnel under the central business district.

Related records include Franchise Reports, 1898-1986 (1802-B2), Public Utilities Department Annual Reports, 1908-1931 (1802-H9), and Register of Franchise Reports, 1898-1911 (18056-02).

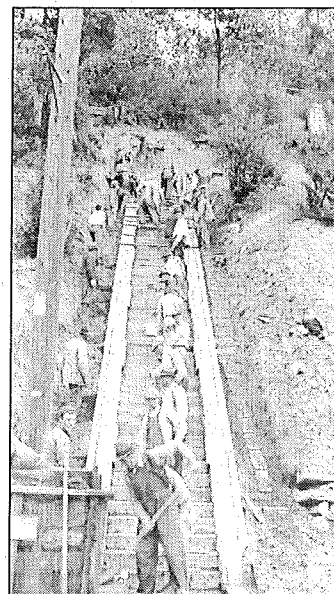
Seattle Municipal Archives to Host Online Version of WPA Guide

The Work Projects Administration in the Pacific Northwest: A Guide to Archival Records in the Pacific Northwest, compiled by Valoise Armstrong at the National Archives—Pacific Alaska Region, provides researchers with an overview of WPA records housed in archival repositories in the Pacific Northwest. The Seattle Municipal Archives is pleased to host an online version of the publication on its website.

Hard copies are available from the National Archives:

NARA's Pacific Alaska Region
6125 Sand Point Way NE
Seattle, WA 98115
or valoise.armstrong@nara.gov

Work Projects Administration (WPA) projects varied widely in scope and were often carried out in cooperation with state and community resources. WPA workers constructed public buildings, roads, parks, and bridges. The listings in the Guide relate to archival records of the local agencies which sponsored the administration



WPA Workers building stairs at Golden Gardens Park. May 15, 1936
Seattle Municipal Archives
Item 29140

and implementation of projects funded by the Work Projects Administration (WPA) or its predecessor agencies, the Civil Works Administration (CWA), Federal Relief Administration and the Works Progress Administration. Institutions included in the Guide are located in Idaho, Oregon and Washington.

Contact the Archives:
archives@seattle.gov

Seattle Municipal Archives
600 Fourth Avenue, Floor 3
Seattle, WA 98104
(206) 233-7807