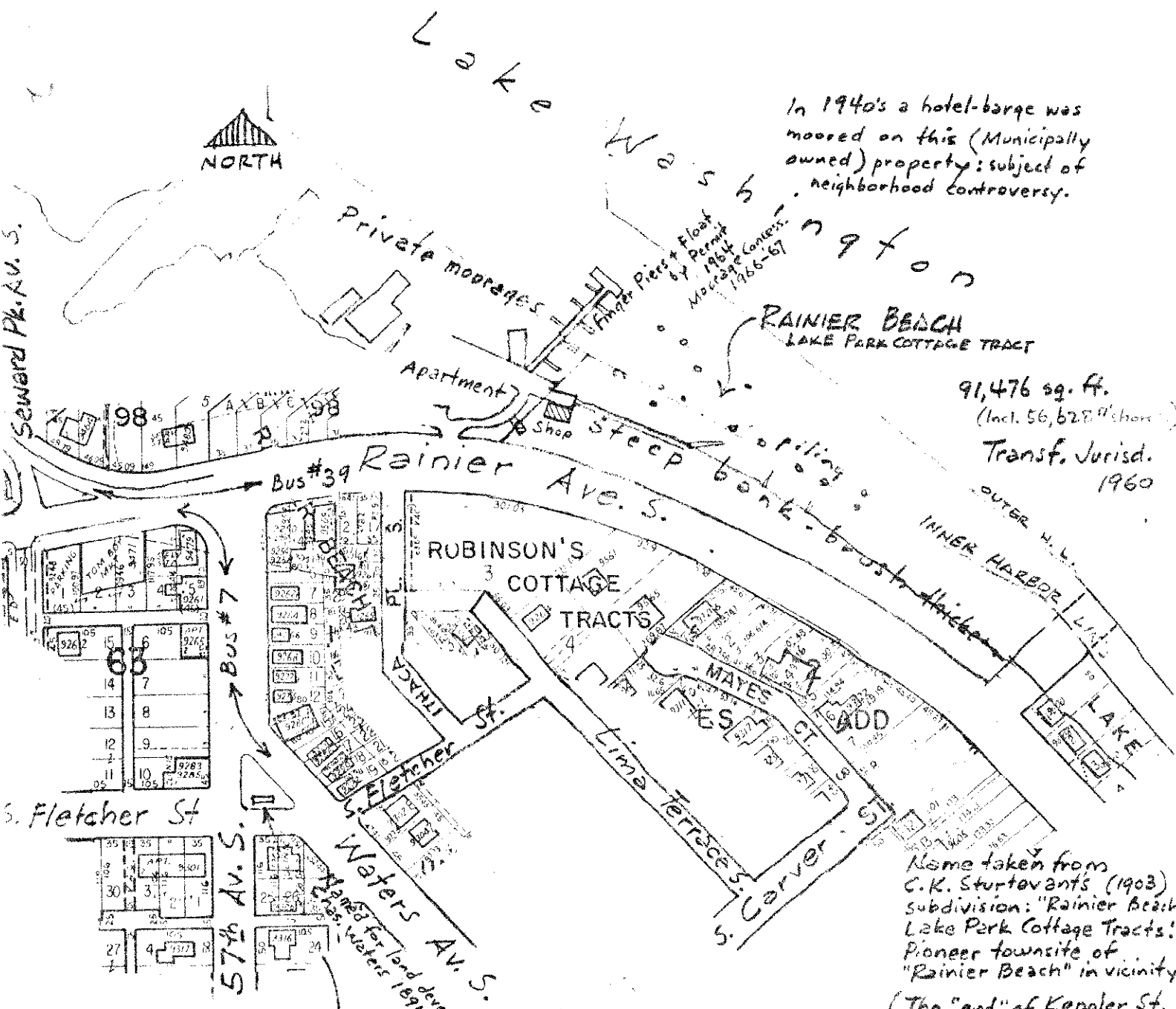


(ATLANTIC CITY PARK)



In 1940's a hotel-berge was moored on this (Municipally owned) property; subject of neighborhood controversy.

RAINIER BEACH  
LAKE PARK COTTAGE TRACT  
91,476 sq. ft.  
(Incl. 56,628 sq. ft. shore)  
Transf. Jurisd. 1960

Name taken from C.K. Sturtevant's (1903) subdivision: "Rainier Beach Lake Park Cottage Tracts!" Pioneer townsite of "Rainier Beach" in vicinity.  
(The "end" of Keppler St., 3 blks. south, was developed by the Park Recreation Div. from 1920-1936 as "Rainier Beach.")

(Mt. Rainier named in 1792 by Capt. Vancouver to honor Admiral Peter Rainier - British.)

**FLETCHER PL.**

2,400 sq. ft.

Transf. of Jurisdiction. 1913  
Platted as "Reserve" in 1891 by Chas. Waters.

Name taken from adjacent street. (Platted as 5th St.)  
In 1946 a community civic group, led by Dr. Wm. G. Hutchinson, was permitted to erect a monument to the boys and girls of World War II.  
Lawn, shrubs, bench.

**FLETCHER PL.**

RAINIER BEACH  
LAKE PARK COTTAGE TRACT

PA 5-3204

L: 7280  
14