

# 興海公園

CALLIGRAPHY BY JANE WONG

HING HAY

"Park for pleasurable gatherings"

Red is symbol of Good Luck  
except in Diplomatic Corps - it signifies Red China so yellow is preferred.

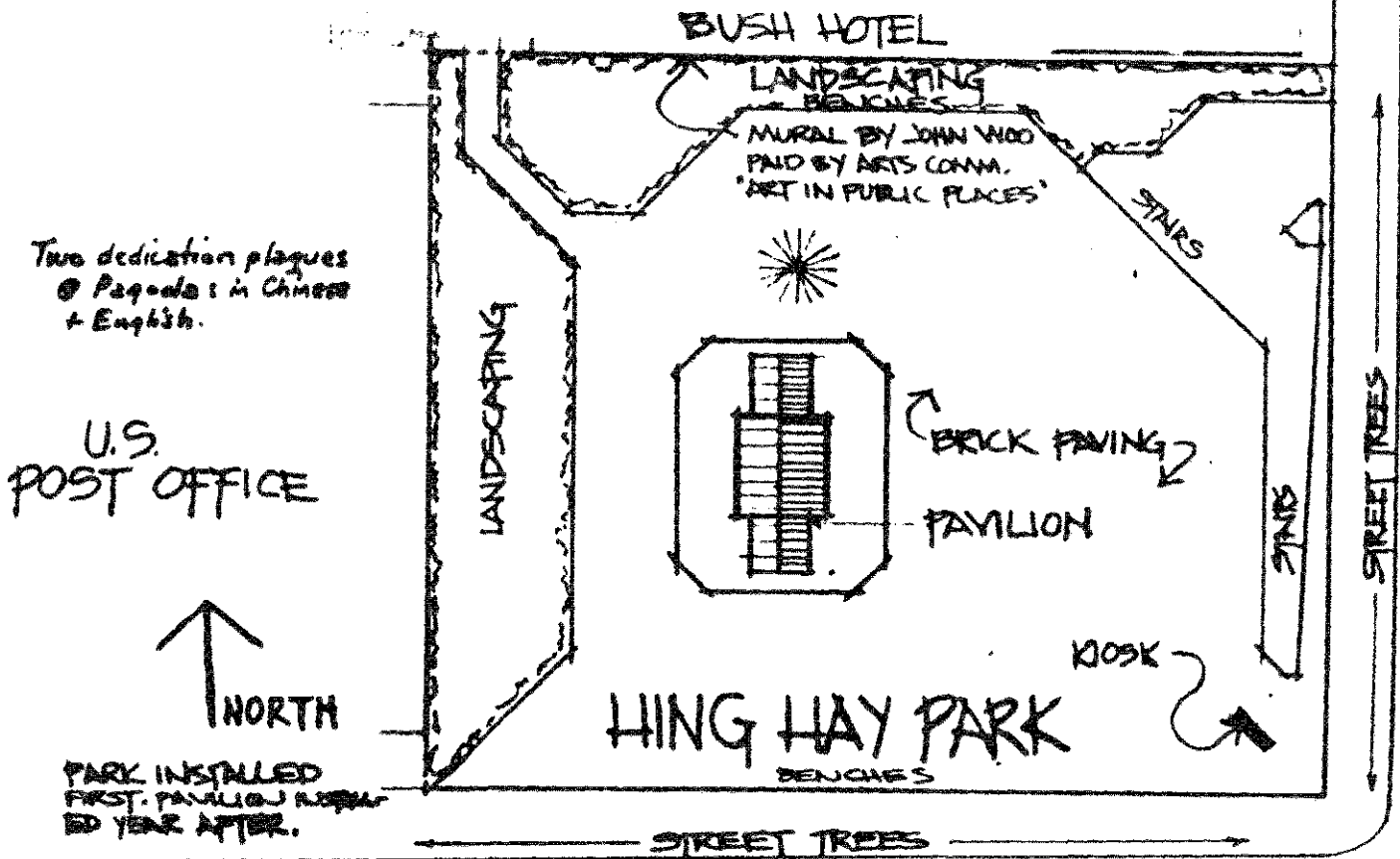
307 - 6th Av. So. is the "oldest public building" remaining in Seattle; built in 1873 as the Main St. School (until 1921).

Wing Luke Memorial Museum  
414 - 8th Av. So / MA3-5124  
History of Chinese in Seattle  
Also: U.W. Burke Museum  
Volunteer Pk. Art Museum

The theatre across from the park is named Kokusai, which means "International" in Japanese. Its original name was "Atlas", the name now applied to the Restaurant @ 424 + Hotel

Chinese Community Club  
522 - 7th Av. S.

Chinese Chamber of Commerce  
508 1/2 - 7th Av. S.



RECEIVED PYS 6-20-77 MAYNARD AVENUE S.

Park designed by Donald K. Sakuma, Landsc. Arch.  
construction cost: \$ 95,800.00

Pavilion was gift of Taipei, Formosa: 1974

Based upon traditional form + construction; its design + assembly was supervised by Lin Jui-hsiung / Ref-Ser Engr. Agency. installed in 1975.

0.33 Acre

Purch. 1970 ↑

(411 Maynard Av. So.)  
(620 So. King St.)

421

HING HAY PARK

# 興 海 公 園

HING HAY

"Park for pleasurable gatherings"

CALLIGRAPHY BY JANE WONG

Red is symbol of Great Luck  
except in Diplomatic Codes - it signifies Red China so yellow is preferred.

307 - 6th Av. So. is the "oldest public building" remaining in Seattle; built in 1873 as the Main St. School (until 1921).

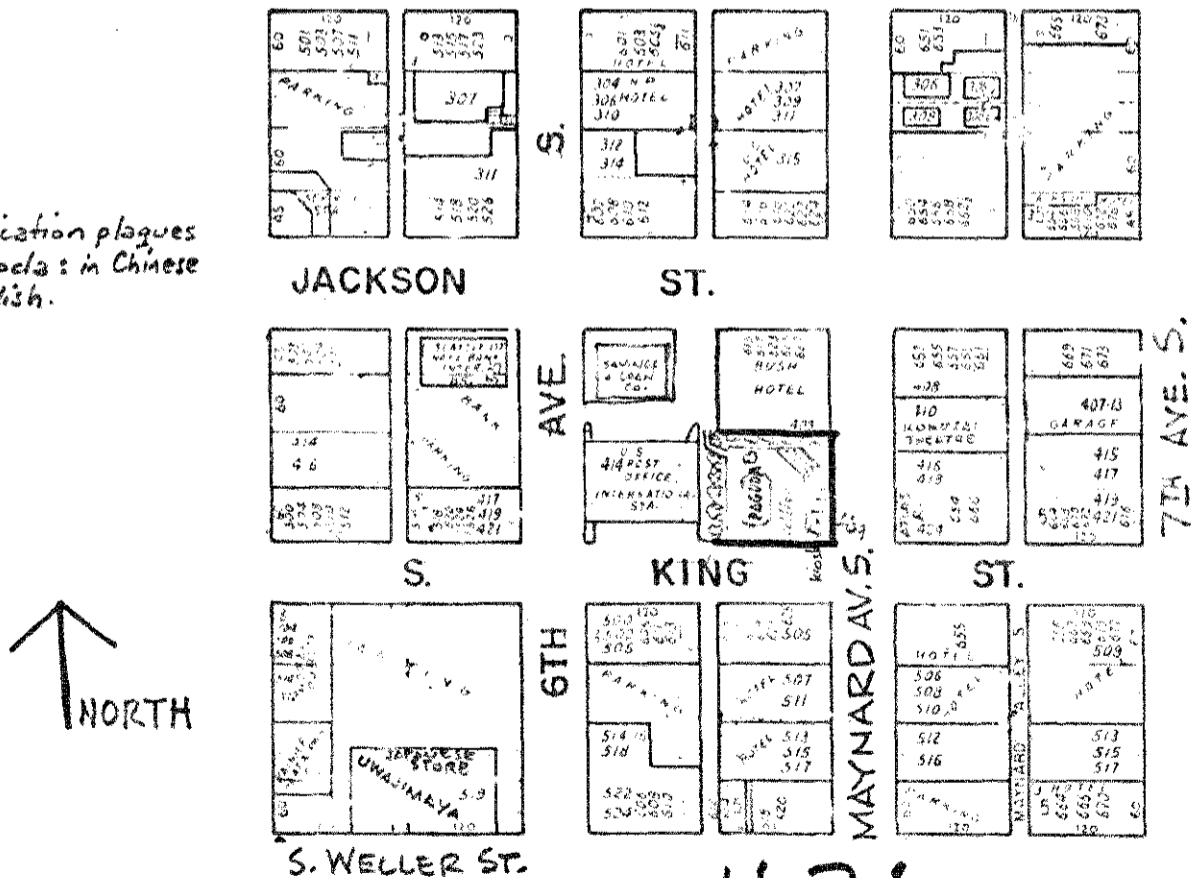
Wing Luke Memorial Museum:  
414 - 8th Av. So / MA3-5124  
History of Chinese in Seattle  
Also: U.W. Burke Museum  
Volunteer Pk. Art Museum

The theatre across from the park is named Kokusai, which means "International" in Japanese. Its original name was "Atlas", the name now applied to the Restaurant @ 424.

Chinese Community Club  
522-7th Av. S.

Chinese Chamber of Commerce  
508 1/2 - 7th Av. S.

Two dedication plaques @ Pagoda: in Chinese + English.



421

Park designed by Donald K. Sakuma, Landsc. Arch.

Pavilion was gift of Taipei, Formosa: 1974  
Based upon traditional form + construction,  
its design + assembly was supervised by  
Lin Jui-hsiung / Ret-Ser Engr. Agency.

0.33 Acre  
Purch. 1970 ↑  
(411 Maynard Av. So.)  
(620 So. King St.)

HING HAY PARK

062876