

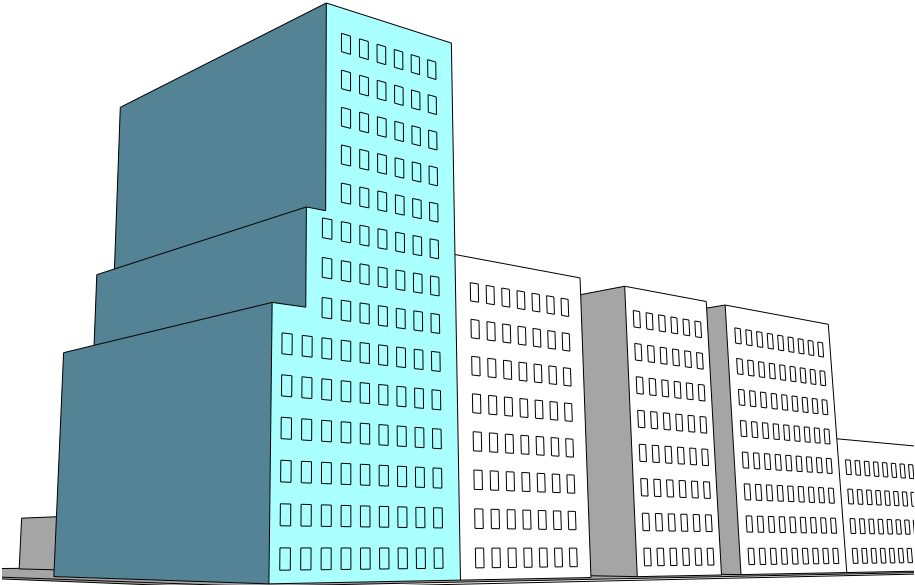
Small Lot Development in DMR Zones

Zoning Diagrams

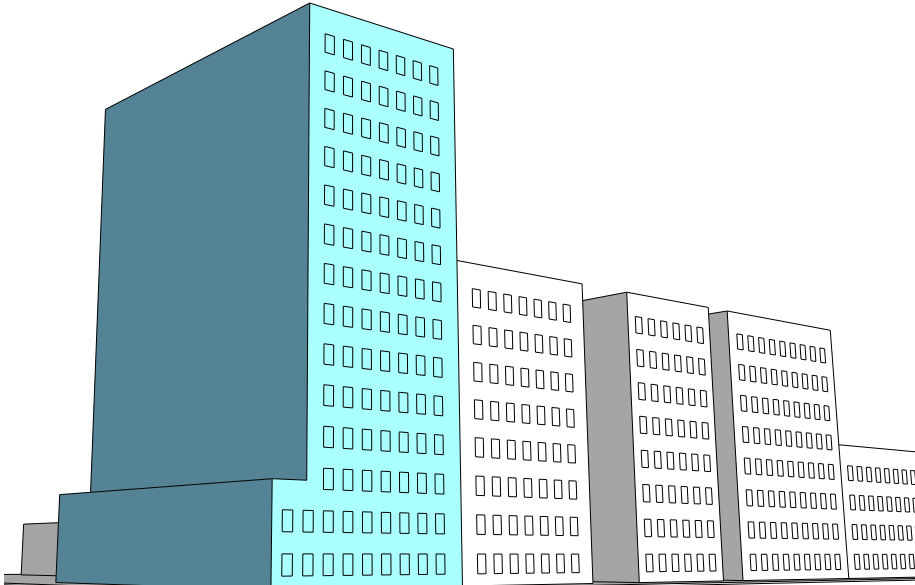
The following documents shows models of likely building massing under existing development standards and those contained in the Small Lot Development proposal released by the Seattle Office of Planning and Community Development (OPCD) in June 2019 for six sample sites. The purpose of the Small Lot Development proposal is to accommodate modular and panelized construction on smaller lots.

More information on the proposal is available at:
www.seattle.gov/opcd/ongoing-initiatives/belltown-small-lot-development.

Single Corner Lot with a Green Street



Existing



Proposed

Single Corner Lot without a Green Street

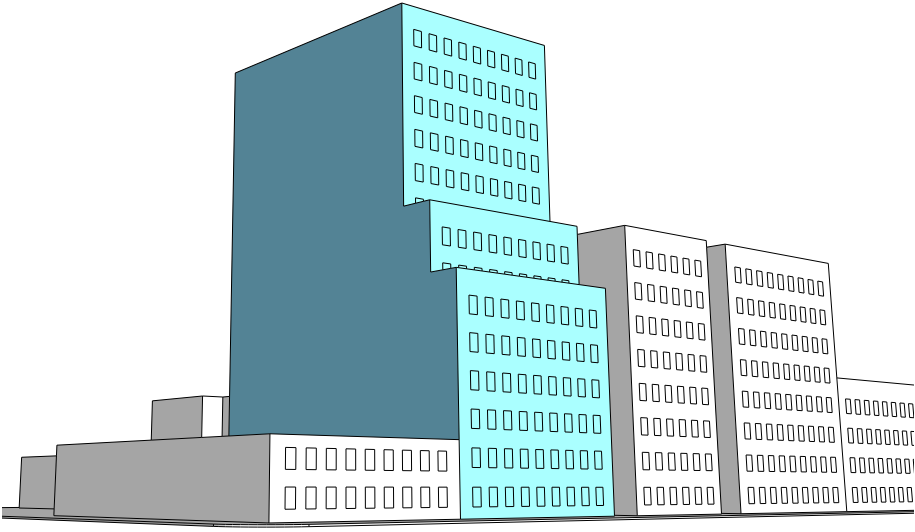


Existing

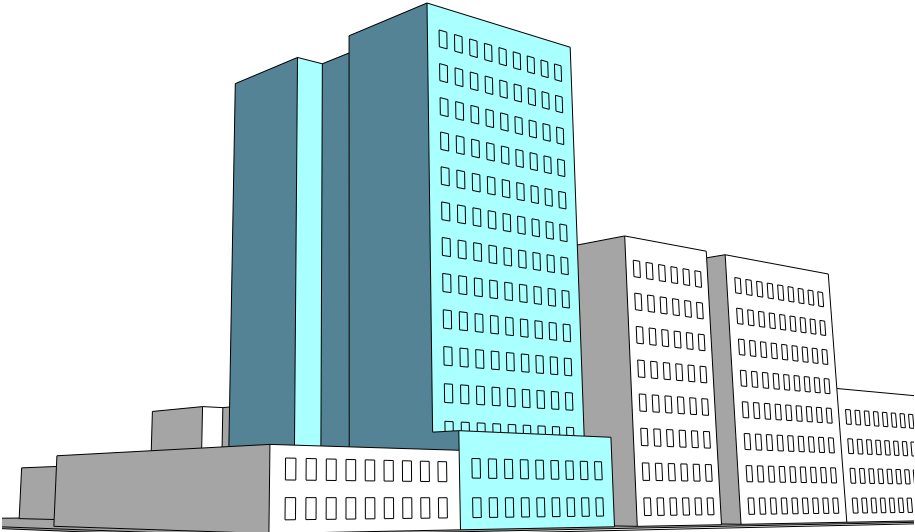


Proposed

Single Midblock Lot with a Green Street

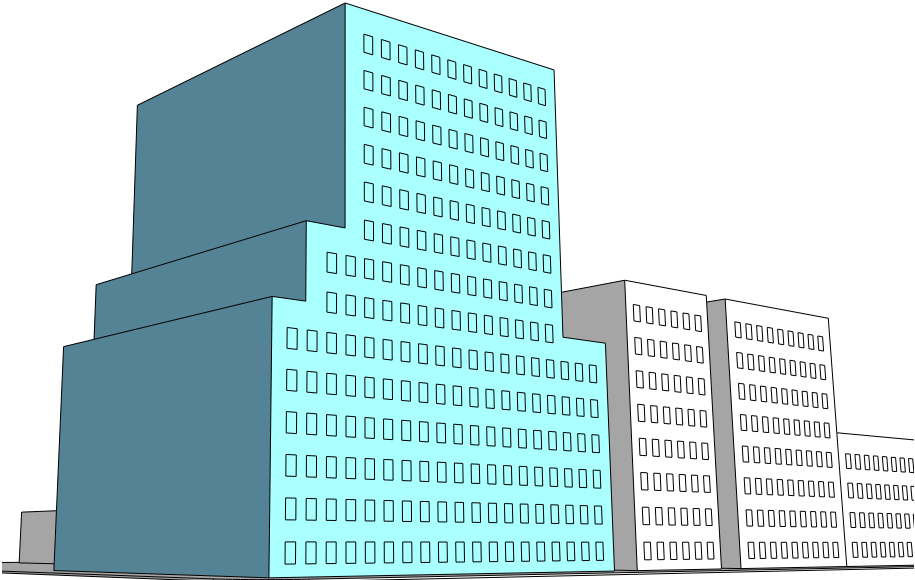


Existing

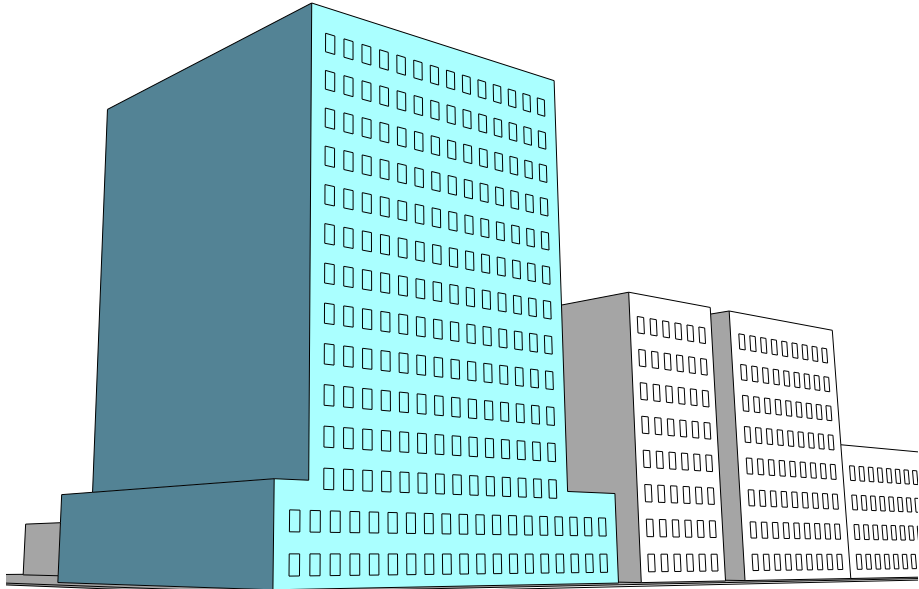


Proposed

Double Corner Lot with a Green Street



Existing



Proposed

Double Corner Lot without a Green Street

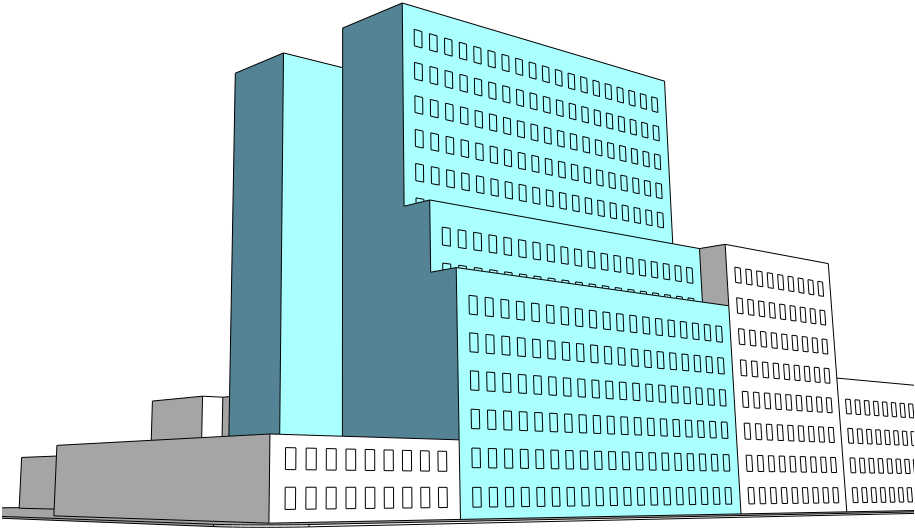


Existing

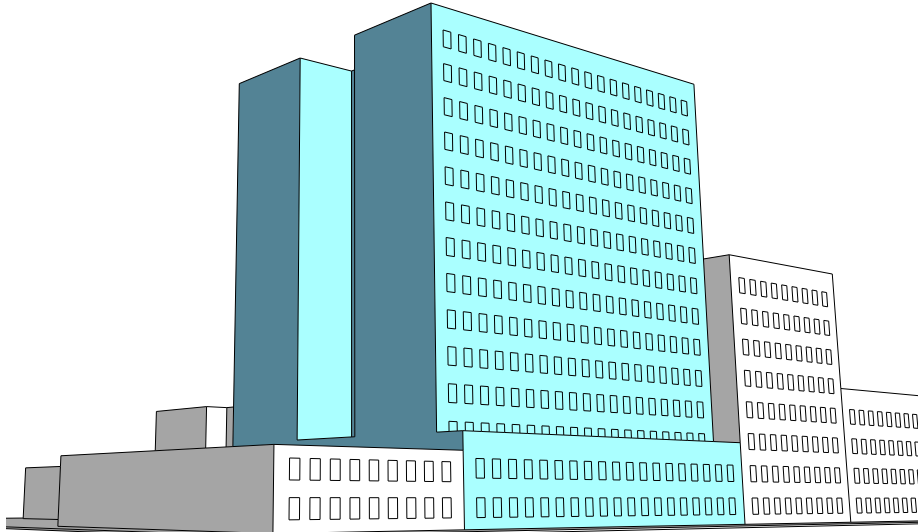


Proposed

Double Midblock Lot with a Green Street



Existing



Proposed