

Welcome! Today's Agenda

May 18, 2022

Please note this meeting is being audio and video recorded by the City

9:00

Welcome

Welcome from Marco Lowe (Mayor's Office)

Land Acknowledgement

Meeting Logistics

Design Review Statement of Legislative Intent (SLI) overview

Design Review program context

Stakeholder Group Introductions

10:00

Introduction of the Racial Equity Toolkit (RET)

Background on Race and Social Justice initiative

Community agreements/meeting ground rules

Learning objectives for this and next week

Defining equity and the path to racial equity

10:55

Closing

Land Acknowledgement

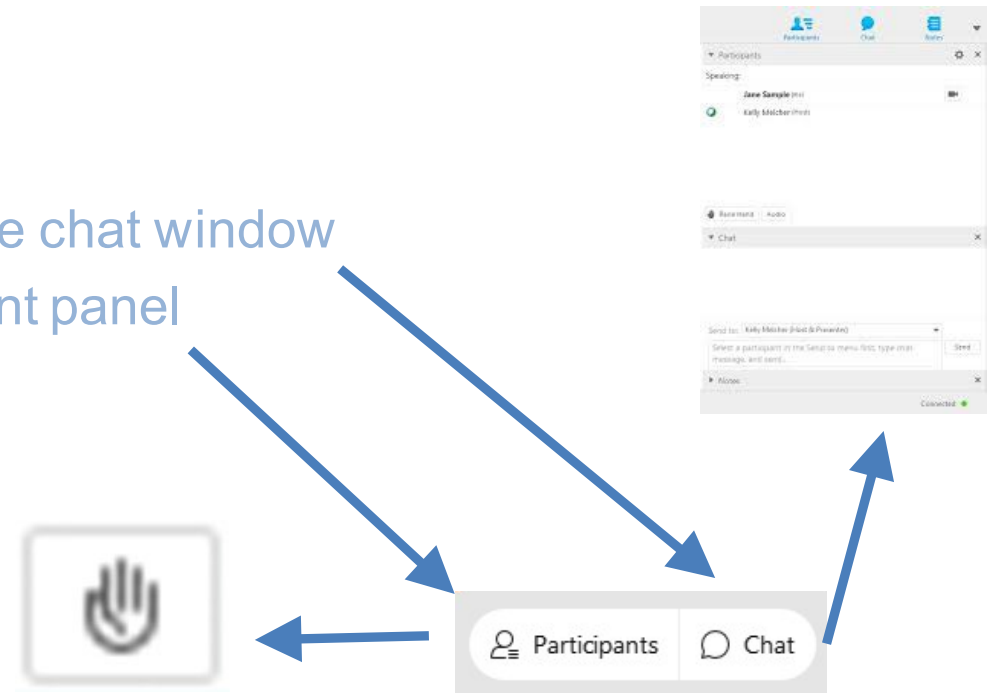
We acknowledge the role that traditional western-centric planning practices have played in harming, displacing, and attempting to erase Native communities. We commit to identifying racist practices, to practice allyship and strive to center restorative land stewardship rather than unsustainable and extractive use of the land.

We humbly recognize that we are on Indigenous land, the traditional and current territories of the Coast Salish people who have reserved treaty rights to this land, including the Duwamish, Suquamish, Muckleshoot, and Stillaguamish. We thank these caretakers of this land who have lived and continue to live here since time immemorial.

Meeting Logistics

- We will record the meetings and recordings will be available online at this website: <https://www.seattle.gov/sdci/about-us/who-we-are/design-review/design-review-stakeholder-meetings>
- All meetings will be held virtually
- If Stakeholders have a question, they may enter those directly into the chat box or “raise your hand” in the Webex interface
- If you are able to, please turn on your camera

To reach the Host only, open the chat window
Or raise your hand in participant panel



Meeting Facilitators and Speakers

Facilitating today's meeting:

Shelley Bolser

Seattle Department of Construction and Inspections (SDCI)

Magda Hogness

Seattle Office of Planning & Community Development (OPCD)

Mike Podowski

Seattle Department of Construction and Inspections (SDCI)

Crystal Torres

Seattle Department of Construction and Inspections (SDCI)

Facilitating future meetings:

Ti'esh Harper

Ti'esh Harper Consulting LLC and Paradigm Shift Seattle

Sofia Voz

Sofia Voz Consulting LLC and Paradigm Shift Seattle

Design Review Statement of Legislative Intent (SLI) Overview



City Council



Seattle Department of
Construction & Inspections



Seattle
Office of Planning &
Community Development

What we're here to do:

Responding to City Council Statement of Legislative Intent

Racial Equity Toolkit
to Assess Policies, Initiatives, Programs, and Budget Issues

RACE & SOCIAL JUSTICE INITIATIVE

The vision of the Seattle Race and Social Justice Initiative is to eliminate racial inequity in the community. To do this requires ending individual racism, institutional racism and structural racism. The Racial Equity Toolkit lays out a process and a set of questions to guide the development, implementation and evaluation of policies, initiatives, programs, and budget issues to address the impacts on racial equity.

When Do I Use This Toolkit?
Early. Apply the toolkit early for alignment with departmental racial equity goals and desired outcomes.

How Do I Use This Toolkit?
With Inclusion. The analysis should be completed by people with different racial perspectives.
Step by step. The Racial Equity Analysis is made up of six steps from beginning to completion:

- Step 1. Set Outcomes.**
Leadership communicates key community outcomes for racial equity to guide analysis.
- Step 2. Involve Stakeholders + Analyze Data.**
Gather information from community and staff on how the issue benefits or burdens the community in terms of racial equity.
- Step 3. Determine Benefit and/or Burden.**
Analyze issue for impacts and alignment with racial equity outcomes.
- Step 4. Advance Opportunity or Minimize Harm.**
Develop strategies to create greater racial equity or minimize unintended consequences.
- Step 5. Evaluate. Raise Racial Awareness. Be Accountable.**
Track impacts on communities of color overtime. Continue to communicate with and involve stakeholders. Document unresolved issues.
- Step 6. Report Back.**
Share information learned from analysis and unresolved issue with Department Leadership and Change Team.

City Council issued a Statement of Legislative Intent requesting that SDCI report on Design Review program outcomes, process improvements, and equity. SDCI and OPCD have gathered this group of stakeholders who will meet throughout 2022.

The stakeholders, SDCI, and OPCD will conduct a Racial Equity Toolkit (RET) analysis of the Design Review Program. SDCI and OPCD will provide a report to the Council including the outcome of that analysis.

Step 1: Set Outcomes

Draft Racial Equity Toolkit (RET) Outcomes

When we have refined the Design Review Program, it should:

- Empower Black, Indigenous, and People of Color (BIPOC) to effect change by understanding the process, feeling comfortable participating, and having equitable access to decision-makers
- Ensure that the thoughts, opinions, and concerns of Seattle residents with diverse lived experiences are heard, captured, and used to shape the design of new development by the Design Review Board members, planners, and applicants to reflect the community vision.
- Run Design Review meetings equitably, in recognition of power dynamics
- Support housing that meets goal for affordability, quality, and diverse housing types
- Work with BIPOC communities so that Design Review maximizes the benefits and minimizes the impacts to housing costs

Related Tasks:

Responding to City Council Statement of Legislative Intent

SDCI and OPCD will create a report to City Council, which will include the results of this Stakeholder RET and:

- Design Review Program outcomes since the program was modified in 2017,
- An analysis of departures sought through the program
- An analysis of whether the program increases housing costs
- A review of national best practices for design review programs with significant public participation components; and
- Recommendations

Quick Poll



In the past five years, I have participated in the Design Review Program as a:

- Applicant
- Public commenter representing a community group or organization
- Public commenter representing myself
- Board member
- City Planner
- Other

Design Review Overview

Why do we value design?

- We spend much of our lives in buildings and moving through the built environment. **We live, work, and play in built environment.**
- Design of the built environment **changes the way we move through and experience the places** we inhabit.
- Design has the **potential to improve the way in which we engage with the built environment** through intentional design which considers both how the design fits into the larger context and quality of the design itself.

Design Review Overview

Purpose:

- Helps new development fit into the neighborhood context and enhance our communities.
- Establishes parameters for discussion of new development through design guidelines.
- Creates an opportunity to hear community's design related concerns.

Design Review Overview

Framework: Design review provides **parameters for reviewing** new development through the Design Guidelines. These guidelines are organized from **broad to narrow** design themes:

- **Context and Site** considers how a project relates to the block, neighborhood, and city.
- **Public Life** considers how the project relates edges to its immediate context.
- **Design Concept** considers how the components (site plan, building, landscaping) of the project relate to themselves, as well as, context and public life.

Design Review Processes

Design Review comes in 3 flavors

Streamlined Design Review

Smaller simpler sites, mostly townhouses

- Administrative (SDCI staff) review only, at:
 - Early Design Guidance
 - Building Permit



Find more info [here](#) and [here](#)

Administrative Design Review

Smaller simpler sites, mostly midrise buildings

- Administrative (SDCI staff) review only, at:
 - Early Design Guidance
 - Recommendation review with the Master Use Permit



Find more info [here](#) and [here](#)

Full Design Review

Larger or complex sites and larger buildings

- Design Review Board review, at:
 - Early Design Guidance
 - Recommendation review with the Master Use Permit
- SDCI Staff review:
 - Preparing for EDG meeting
 - Review changes between Design Review Board meetings
 - Resolve any recommended conditions after the final Board Recommendation meeting



Find more info [here](#) and [here](#)



Design Review Tools


Design Guidelines are adopted by City Council:

- Seattle Design Guidelines (city-wide)
- Downtown (specific to Downtown)
- 24 sets of neighborhood supplemental Design Guidelines

More info:

- [Design Guidelines Overview](#)
- [Design Guidelines](#)
- [Design Review Program](#)

	Citywide
CS	Context + Site
1	Natural Systems and Site Features
2	Urban Pattern and Form
3	Architectural Context and Character
PL	Public Life
1	Connectivity
2	Walkability
3	Street-Level Interaction
4	Active Transportation
DC	Design Concept
1	Project Uses and Activities
2	Architectural Concept
3	Open Space Concept
4	Materials
	Downtown
1	Site Planning and Massing
2	Architectural Expression
3	The Streetscape
4	Public Amenities
5	Vehicle Access and Parking

NEIGHBORHOOD-SPECIFIC DESIGN GUIDELINES	
Each of the eight districts contain neighborhoods that have adopted their own supplemental design guidelines. Those neighborhoods not listed are governed by the citywide design guidelines.	
1/ Northwest + Ballard + Greenwood/Phinne + Northgate	
2/ Northeast + Green Lake + Lake City/North Dist + Northgate + Roosevelt + University + Wallingford	
3/ West + South Lake Union + Upper Queen Anne + Uptown	
4/ Southeast + Mount Baker + North Beacon Hill + Othello	
5/ Southwest + Admiral Junction + Morgan Junction + West Seattle	
6/ Downtown + Belltown	
7/ East + Capital Hill + Pike/Pine + Yester Terrace	
8/ Central	

Stakeholder Introductions and Reflection

Introduce yourself: (3-4 minutes per person)

- Name
- Pronouns
- Race
- Organization you represent, if applicable
- Your role in the Design Review process
- What you hope to bring to this effort

hello

my name is

*Name

*Race

*Pronouns

* Role in Design Review

*Organization

* What you hope to bring to this effort

**Gender
Pronouns:**

They/Them/Theirs

She/Her/Hers

He/Him/His

- Chad
- Chris
- Donna
- Gladys
- Grace
- Hamdi
- John
- Justin
- Maria
- Pat F
- Patrick G
- Roque
- Sharon
- Stephen
- Tejal
- Todd B
- Todd L
- Jamie

RACE & SOCIAL JUSTICE INITIATIVE



Seattle Department of
Construction & Inspections



Seattle
Office for Civil Rights

DESIGN
REVIEW

Introduction to the Racial Equity Toolkit



Seattle
Office of Planning &
Community Development

RACE & SOCIAL JUSTICE INITIATIVE

Racial disparities have been eliminated and racial equity achieved.



Seattle
Office for Civil Rights

[www. https://www.seattle.gov/rsji](https://www.seattle.gov/rsji)

Group Agreements

- Be present and stay engaged.
- Embrace other people's experiences even if they're not your own. Everyone's input is valued and needed.
- Oops and ouches: Be willing to own the impact of your contributions.
- Use "I" statements. Speak for yourself and from your own experience.
- Critique ideas, not people. Name behavior. Request or suggest changes without attacking character.
- Push beyond your current knowledge base! Embrace learning.

LEARNING OBJECTIVES

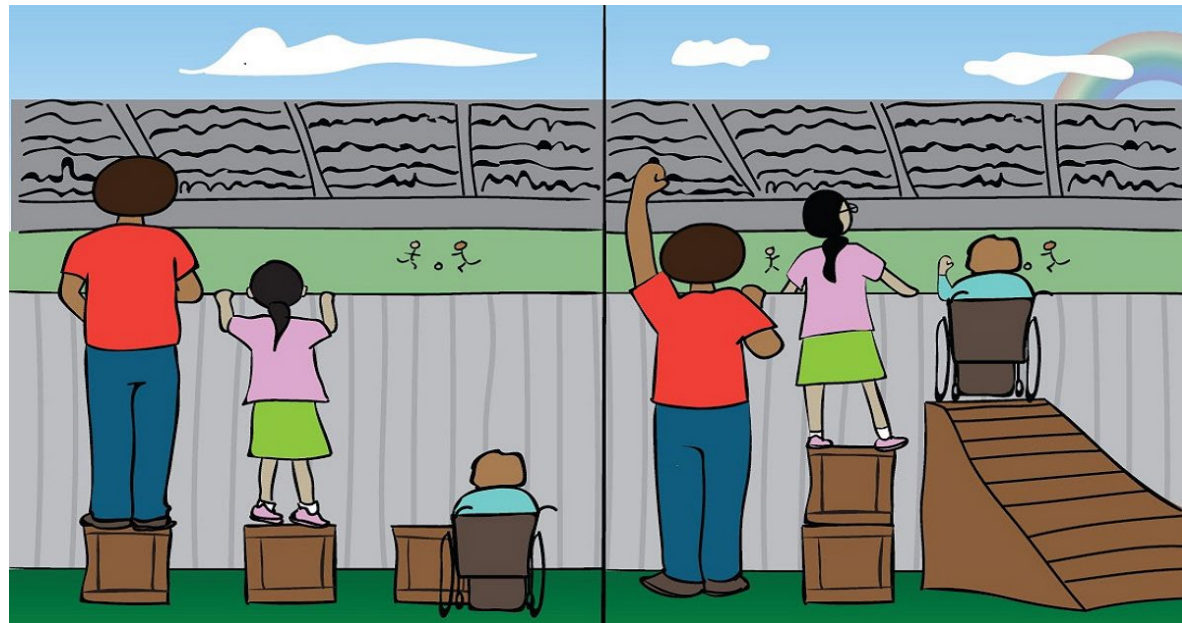
Today:

- Clarify racial equity and structural racism, and explore design review roles in achieving racial equity and eliminating structural racism

Next week:

- Review forms of implicit racial bias and explore strategies to interrupt it
- Explore the different stages of the Racial Equity Toolkit (RET) and how to best utilize them
- Start applying the RET

What is the fence?

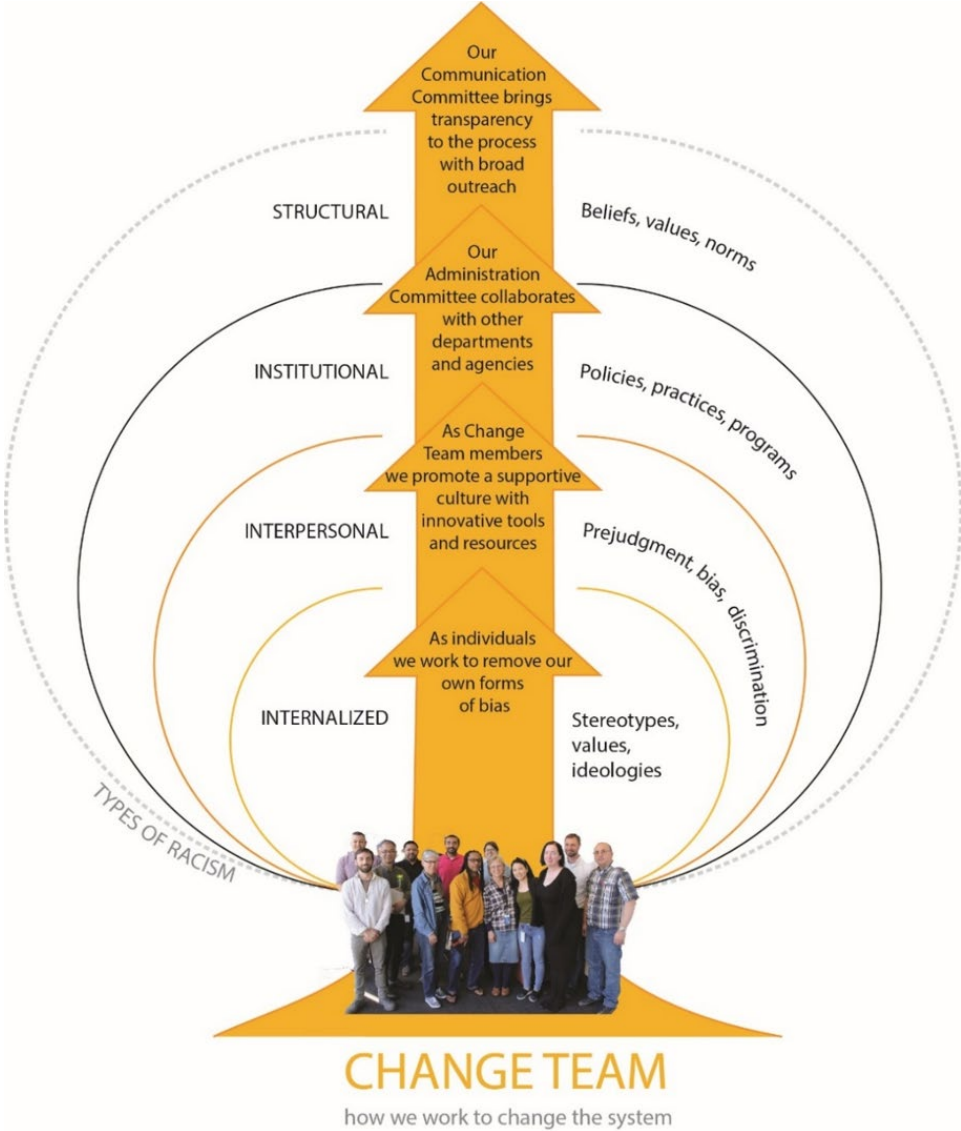
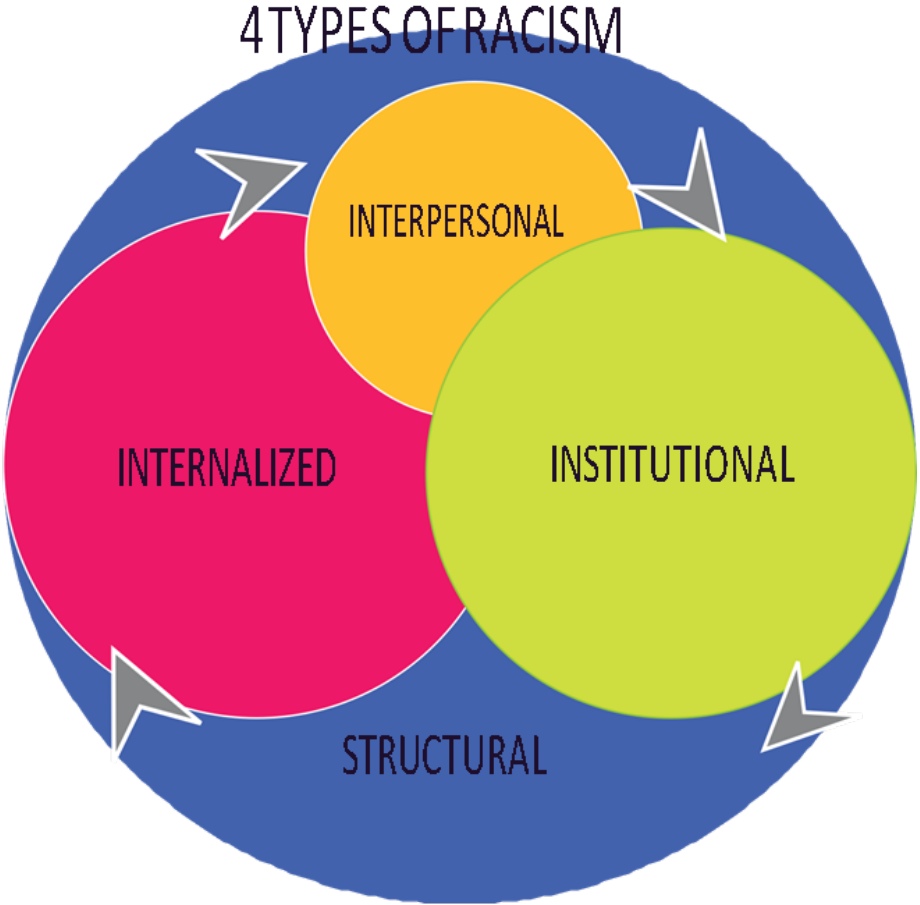


Who distributes the bikes?



Dominant Narrative	Diversity Access	Equity
<p>Consciously or unconsciously seeking or avoiding individual blame</p>	<p>Calling your work “equity” while providing solutions focused on access and diversity in numbers. Focusing on your own personal/institutional comfort. Tokenizing. Resistant.</p>	<p>Seeks structural solutions that build collective power; transforms institutions and systems.</p>
<ul style="list-style-type: none"> • <i>It’s their faults that they can’t succeed.</i> • <i>It’s not my problem.</i> • <i>Is that racist?</i> • <i>Are they racists?</i> • <i>I’m not racist.</i> 	<ul style="list-style-type: none"> • <i>We’re doing the best we can.</i> • <i>We’re not perpetuating racism.</i> • <i>We don’t have time to share decision-making processes or build relationships with all levels of employees or with the community. Let’s invite them to our event.</i> • <i>We had three POC in our advisory group!</i> 	<ul style="list-style-type: none"> • <i>How is racism playing out in this situation?</i> • <i>What is the impact?</i> • <i>How am I/are we implicated in that?</i> • <i>How can we center the experiences and leadership of those who are most impacted?</i> • <i>How is racism intersecting with other forms of oppression?</i>
<p>NO ACTION Maintains status quo</p>	<p>TRANSACTIONAL Maintains status quo</p>	<p>TRANSFORMATIONAL Power shifts</p>

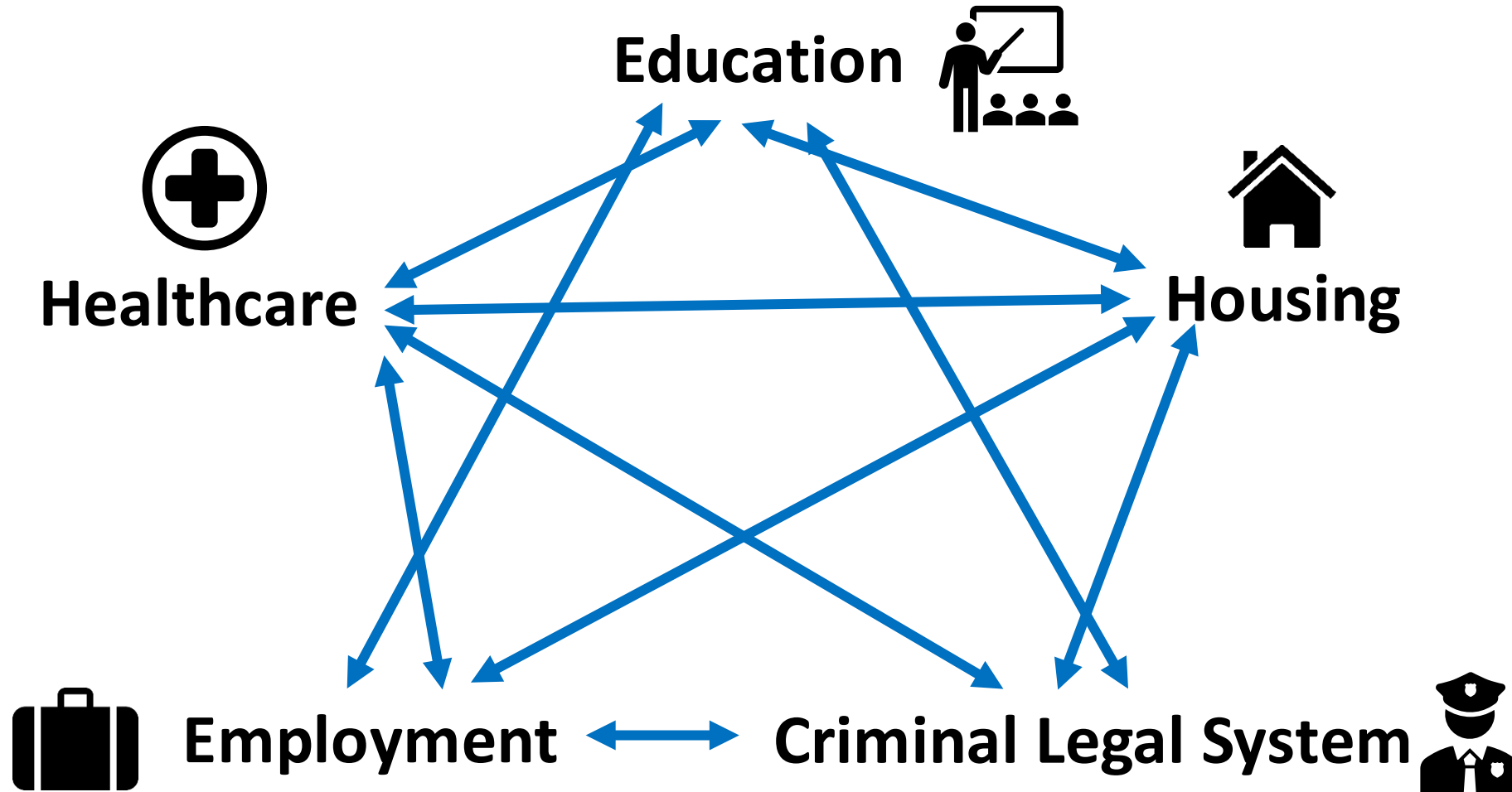
4 TYPES OF RACISM



VIDEO



WEB OF STRUCTURAL RACISM



PRACTICING THE PROCESS

Our homework: Practice what we've learned today



We look forward to continuing this work at our next meeting on May 25!

A photograph of the Space Needle tower in Seattle, Washington, silhouetted against a vibrant sunset sky. The sky transitions from deep orange and yellow near the horizon to a darker, purple-tinged blue at the top. The tower's distinctive saucer-shaped observation deck is clearly visible, with its support struts extending downwards. The overall mood is serene and appreciative.

THANK YOU