



## Seattle Department of Transportation Notice of Street End Improvement

We are making improvements to the East Martin Street shoreline street end, also known as Good Turn Park. The project will improve public access to the shore. We plan to make the following improvements:

- extend 6' wide asphalt sidewalk across East Martin Street
- create a rain garden between the sidewalk extension and the street
- relocate the bike parking to a new pad new sidewalk
- make minor regrades between the project site and the surrounding landscaping
- install a precast curb that will extend across the project area to protect the landscaping.
- install 4-hour parallel parking on Fairview Ave S

We have scheduled construction for either the spring or autumn of 2023. Our crews will be building the project. Following the completion of our city led project, the Eastlake Community Council has proposed some additional minor improvements to the interior of the street end. As details of this project become available, we will share information with the community.

If you would like to attend a public meeting, see our proposed plans, or receive other updates, please e-mail Omar Akkari at [omar.akkari@seattle.gov](mailto:omar.akkari@seattle.gov).

### **THE SHORELINE STREET END PROGRAM**

Lake Washington, Lake Union, Puget Sound, and other waterways offer Seattle residents more than 200 miles of magnificent shoreline. While much of it is private or park land, 142 public streets in Seattle end on shorelines. These “shoreline street ends” are precious community assets designated by the City of Seattle (City Resolution 29370, adopted in September 1996) as special rights-of-way that should be preserved and developed for public use.

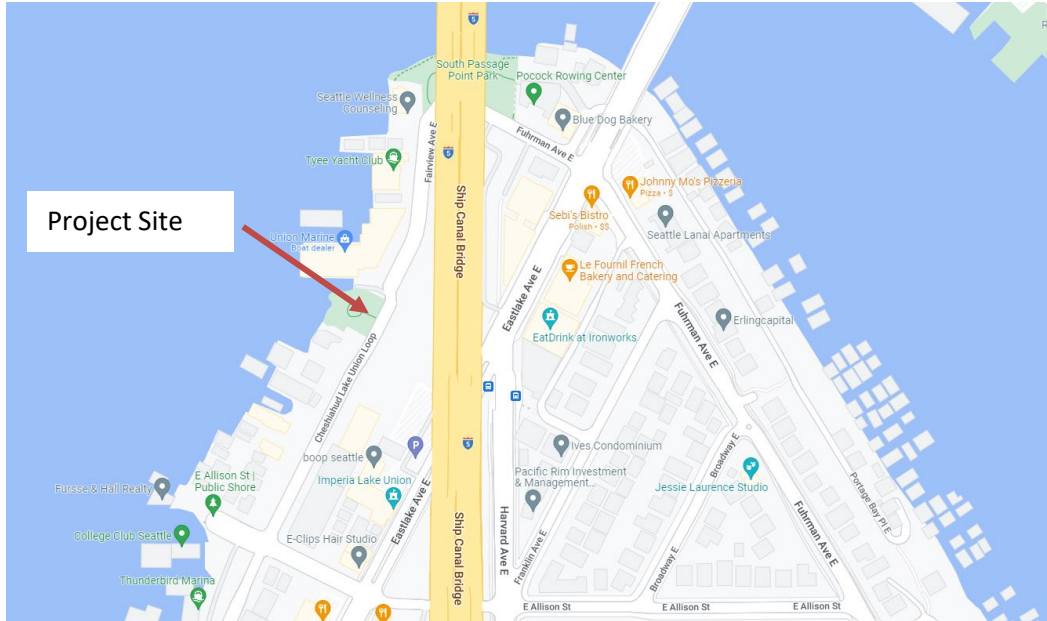
Though some street ends have been improved for public use, nearly two-thirds are unmarked, overgrown, or have private encroachments. By partnering with residents and community groups, we intend to improve these hidden spots so Seattleites may have increased water access and enjoyment.

Guided by the policy that public access allows the highest and best use of these sites, our Shoreline Street Ends Program manages the process for improving a shoreline street end and, in some cases, permitting of private uses. Director's Rule 12-2015 explains the city guidelines for this program.

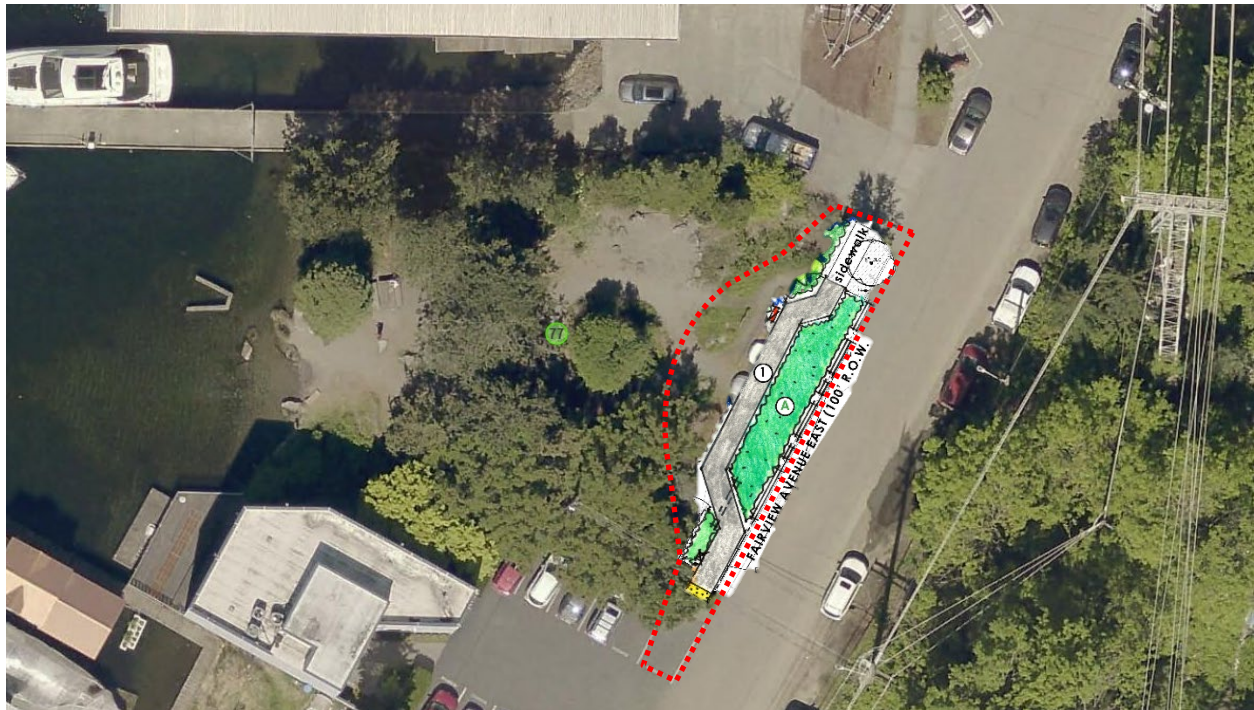
More information can be found on the program's website:  
[http://www.seattle.gov/transportation/stuse\\_stends.htm](http://www.seattle.gov/transportation/stuse_stends.htm)

## PROJECT LOCATION

The E Martin St shoreline street end is located at 3201R Portage Bay Place East. The construction impacts are anticipated to extend to the areas indicated by the dotted red line. Crews will maintain access to the public shore during construction, but limited access restrictions may occur.



Site Vicinity Map



Project Area Map

1 | 6 ft. Wide Asphalt Sidewalk

A | Rain Garden

## **PUBLIC COMMENT**

We will be hosting a several virtual meetings to take comments and provide updates as this project develops. Please send an email to the address below if you would like to be sent invites to our virtual meetings.

Our first meeting will be held September, 7, 2022 at 6pm

Teams Meeting Link: <https://tinyurl.com/36afmzsa>

Call in: +1 206-686-8357

Phone Conference ID: 182 023 19#

Please submit your comments by sending a letter or email to:

Seattle Department of Transportation  
Attn: Public Space Management Program  
PO Box 34996  
Seattle, WA 98124-4996

OR [omar.akkari@Seattle.gov](mailto:omar.akkari@Seattle.gov)

***Please include your name and contact information, and the specific reason for your comment concerning the improvement project at the E Martin St shoreline street end.***

Any person may request a review or reconsideration of a decision that we have made. This request shall be sent to the Director of Transportation within 10 calendar days of the decision as required by SMC Section 15.04.112.

If you'd like to meet with Omar Akkari to discuss the impacts of the project on your property, please email the request to [omar.akkari@Seattle.gov](mailto:omar.akkari@Seattle.gov).