



# Shoreline Street Ends

## Program Overview & E Martin Street Improvements



# Our vision, mission, and core values

**Vision:** Seattle is a thriving equitable community powered by dependable transportation

**Mission:** to deliver a transportation system that provides safe and affordable access to places and opportunities

Committed to **6 core values:**

- Equity
- Safety
- Mobility
- Sustainability
- Livability
- Excellence

# Presentation Overview

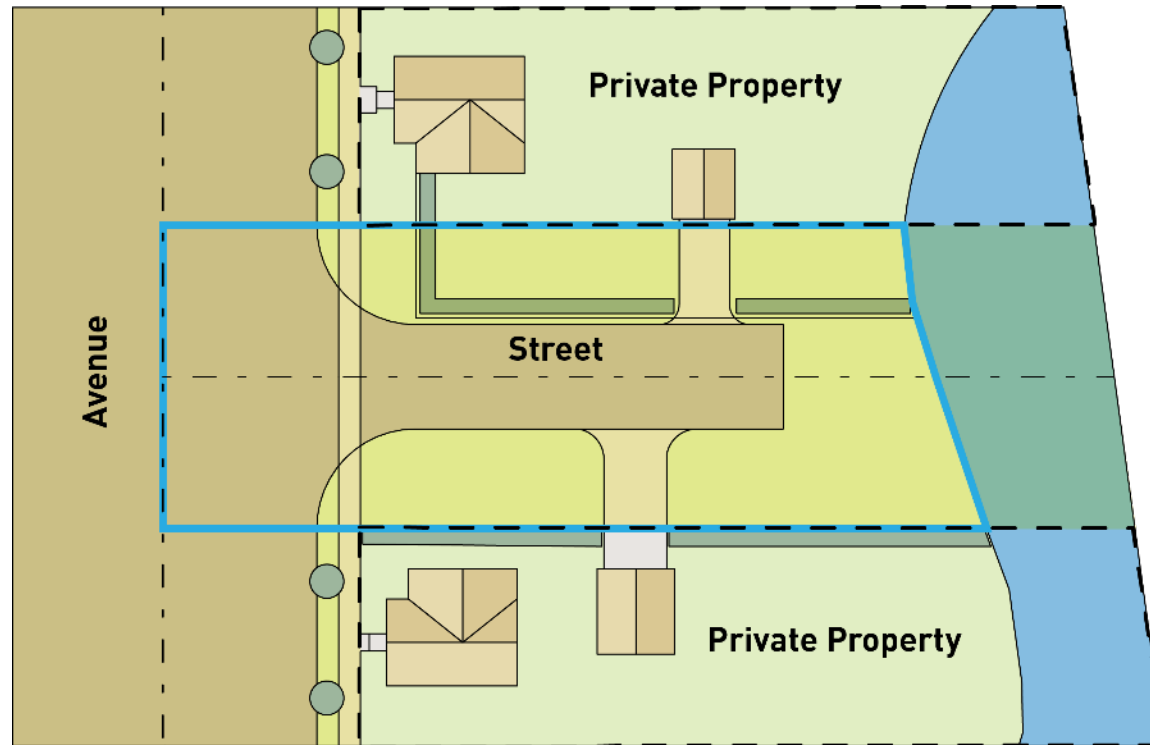
- **What is a Shoreline Street End?**
- **Background**
- **Program Goals**
- **E Martin Street Improvements**

# What is a Shoreline Street End?

- Council designated portions of rights-of-way that abut shoreline
- Council prioritized these sites for providing public access and maritime industry use
- SSE permit fees provide program funding

#132 | Brooklyn Ave NE

# What is a Shoreline Street End (SSE)?



- Shoreline Street End Boundary
- - - Centerline of Right-of-Way
- - - Private Property Line
- Public Right-of-Way



# What is a Shoreline Street End (SSE)?

Shoreline Street End ----- Intersection

Ordinary  
High  
Water  
Mark





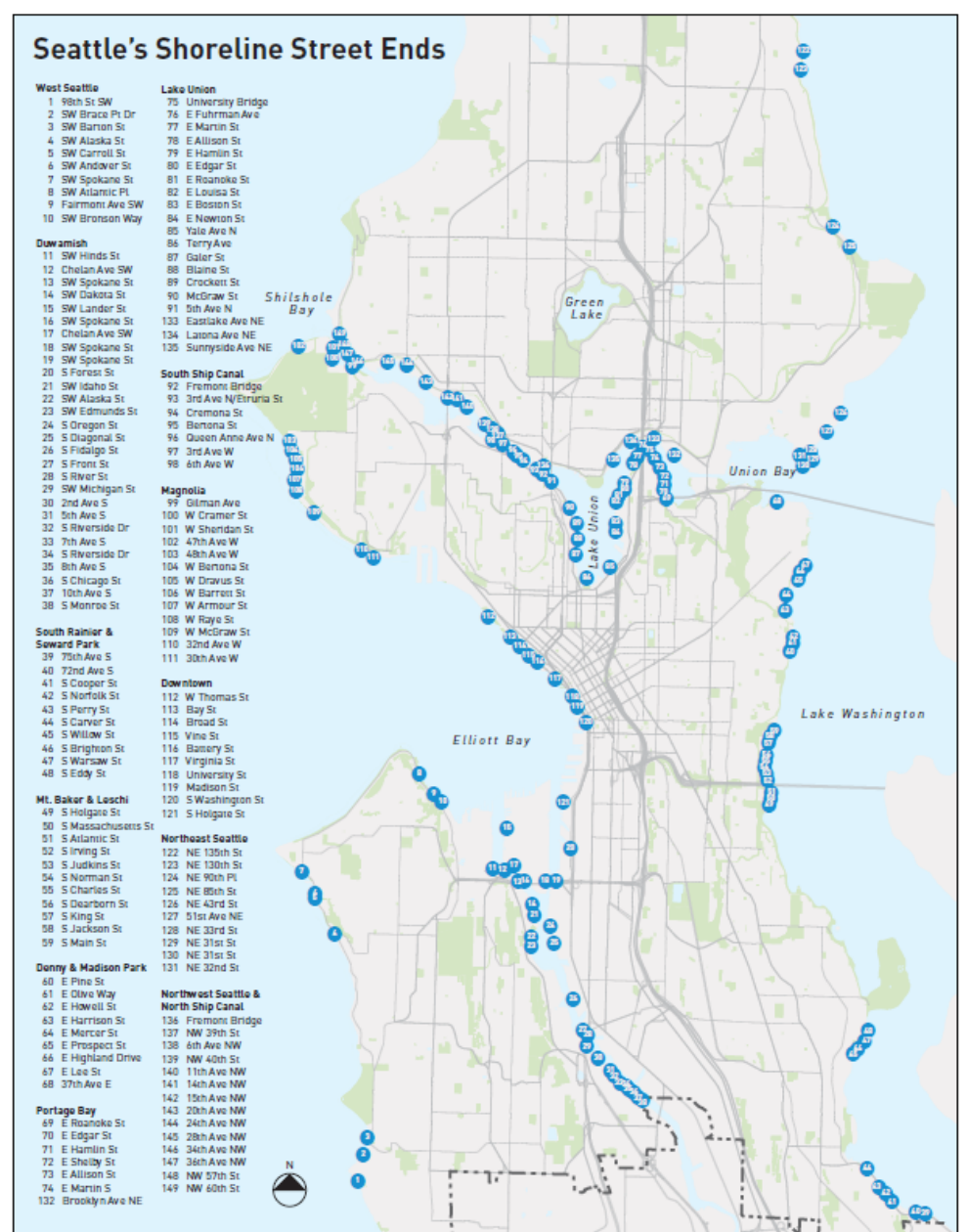
**Vision:** Shoreline street ends are precious community assets that thrive through robust community partnerships. Each one tells a different story of Seattle's cultural and environmental history and provides everyone the opportunity to experience and enjoy the splendor of Seattle's shorelines.

**Mission:** SDOT's Shoreline street ends program improves public access, protects unique views, enhances habitat, supports maritime industry, and fosters stewardship to create long-lasting community assets.

#140 | 11<sup>th</sup> Ave NW

# Where are the 141 Shoreline Street Ends located?

- 18 Puget Sound
- 12 Elliot Bay
- 23 Duwamish River
- 35 Lake Washington
- 9 Portage Bay
- 17 Lake Union
- 3 Union Bay
- 24 Ship Canal
- 8 no longer rights-of-way





**After**



**Before**



Photos: Google Street View



**After**



**Before**

Photos: Google Street View



# Planned SDOT Improvements

## SSE-77 | E Martin St Stormwater and Pedestrian Access Improvements

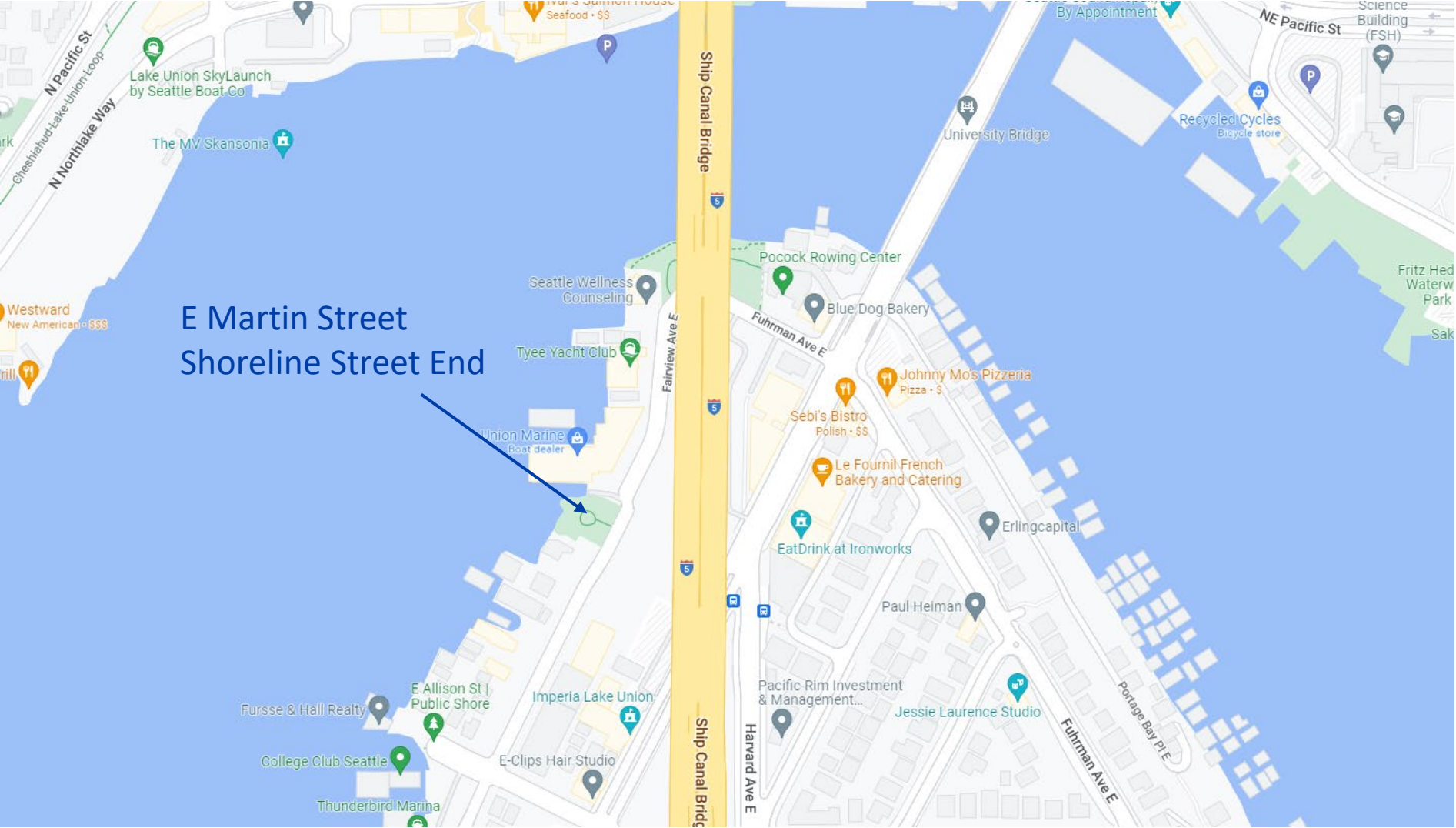
**Purpose:** Resolve stormwater and rutting issues in parking area by moving parking to the street and replacing it with a voluntary conveyance swales. Provide improved pedestrian access with a sidewalk extension and relocated bike parking.

**Budget:** \$40,000 - \$50,000 | In-house staff used for design and delivery

**Scope:** Internal Design and crew delivered construction

**Schedule:** Design, Permitting, and Construction | Spring - Fall of 2023

# Site Location Map





# Street View Photos





# Street View Photos



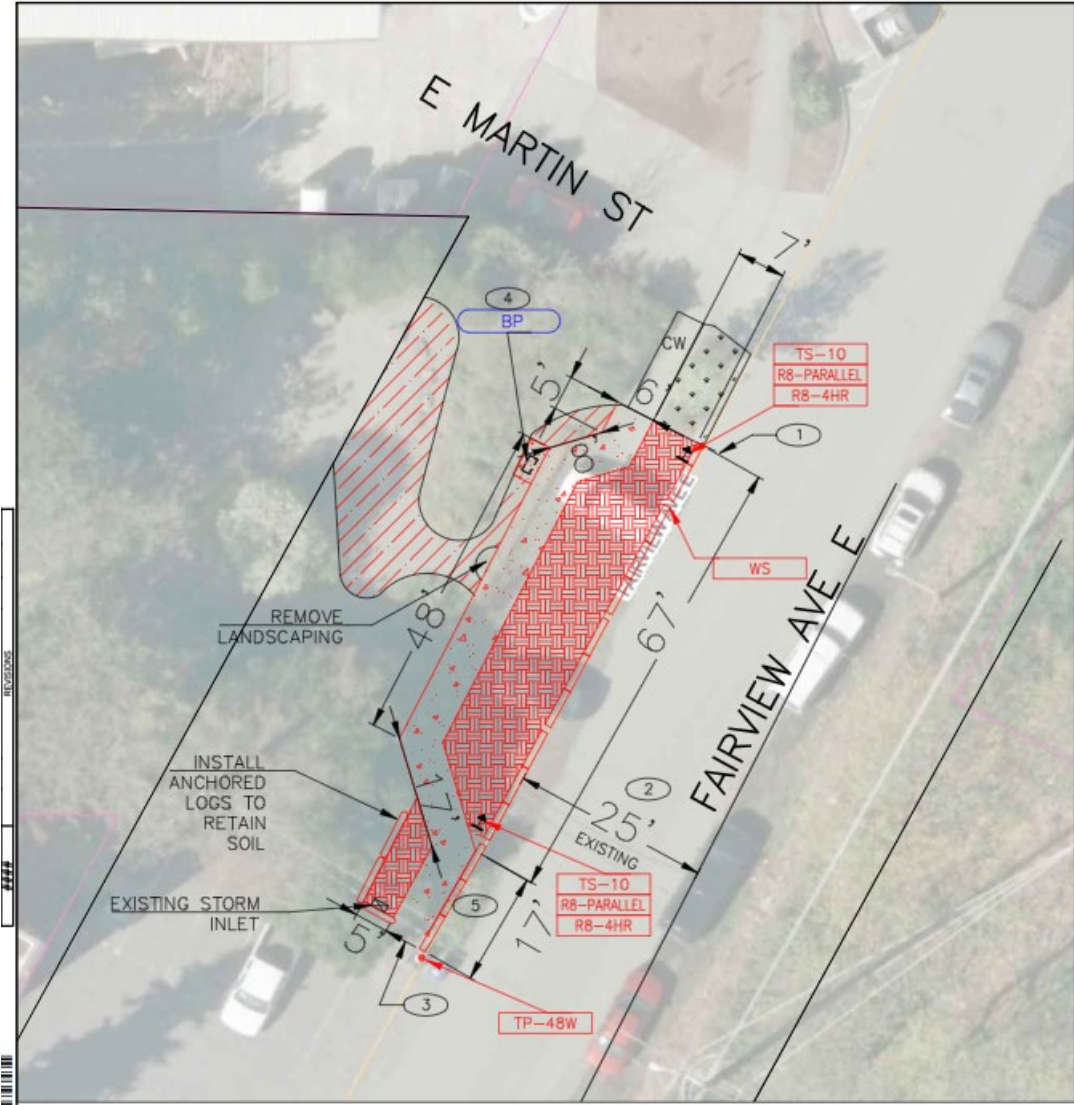


# Site Plan



- 1 Relocated bike parking
- 2 Precast Concrete Curbs & 4-hour parallel parking adjacent to SSE
- 3 Conveyance Swale
- 4 Existing path brought to sidewalk grade
- 5 New asphalt or concrete sidewalk
- 6 Pipe under sidewalk to catch basin
- 7 Existing catch basin

# Site Plan



## CONSTRUCTION NOTES

- ① INSTALL 6 X 1 FT WHEEL STOPS WITH 1 FT GAP AFTER 3 CONSECUTIVE WHEEL STOPS (STD PLAN 295)
- ② MAINTAIN 25 FT WIDTH FROM EDGE OF PAVEMENT TO EDGE OF WHEEL STOP
- ③ INSTALL 6 FT WIDE ASPHALT WALKWAY PER STD PLAN 425
- ④ INSTALL 6' X 3' ASPHALT PAD FOR BIKE PARKING PER STD PLAN 425
- ⑤ INSTALL ADDITIONAL ASPHALT PER STD PLAN 401D TO ENSURE 25 FT ROAD WIDTH. SEE DETAIL 2

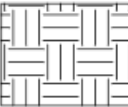


SDOT-TRANSPORTATION OPERATIONS CONCURRENCE PRIOR TO CONSTRUCTION		
ROUTING	DATE	INITIAL

## LEGEND

- BP BIKE PARKING
- TS-10 10' TELESPAR POST
- TP-48W 48" WHITE TUFF POST
- R8-4HR 4 H PARKING 7AM-6PM  
EXC SUN-HOL
- R8-PARALLEL PARALLEL PARKING ONLY

- INSTALL
- REMOVE
- RELOCATE

 EXCAVATE 1.5' OF EXISTING SOIL AND GRAVEL AND REPLACE WITH PLANTING SOIL PER STD PLAN 292

 HOT MIX ASPHALT PER STD PLAN 425

 6' X 1' WHEEL STOP

 GRADING FOR WALKWAY





**SDOT Effort** - - - -

**Hardscape**

- 1. New Asphalt (AC) sidewalk min. 5'
- 2. Concrete Wheelstops
- 3. SDOT has logs from Port - for play, for seating - Delivery, install, per ECC
- 4. SDOT has boulders - Delivery, install, per ECC

**Irrigation**

- 5. Confirm extend irrigation to Rain Garden

**Landscape**

- 6. New Rain Garden - provide 12" soil, 1G plants at 18" O.C.

**ECC Effort**

**Hardscape**

- A. Renew gravel accessible path, min. 5': nice, clear Arc!
- B. Top off sandy spot
- C. Consider Art
- D. Regrade for second sandy spot, sandy trails
- E. SDOT has logs from Port - for play, for seating - Delivery, install, per ECC
- F. SDOT has boulders - Delivery, install, per ECC

**Irrigation**

- G. Confirm extend irrigation to new planting beds

**Landscape**

- H. New taller tree - 15 G
- I. Small tree(s) -Vine Maple -15 G
- J. Shrubs - 3" compost, 5G plants at 36" O.C.
- K. Perennials/Grasses-3" compost, 1G at 24" O.C.



# Questions?



Omar.Akkari@seattle.gov | (206) 233-5114  
[www.seattle.gov/transportation/stuse\\_stends.htm](http://www.seattle.gov/transportation/stuse_stends.htm)

[www.seattle.gov/transportation](http://www.seattle.gov/transportation)

