

Holden Natural Drainage Systems (NDS) Project



Improving our communities with natural drainage systems



Seattle Public Utilities (SPU) is working on a natural drainage systems (NDS) project in your neighborhood that will deliver multiple community benefits including improved creek water quality, roadway and pedestrian safety improvements, and increased green space.

Project Overview

More than 12 million pounds of pollution are carried into our water bodies through stormwater runoff each year. Stormwater that falls on roofs, streets, and parking lots in your neighborhood can pick up harmful pollutants before entering Longfellow Creek, which flows into Puget Sound.

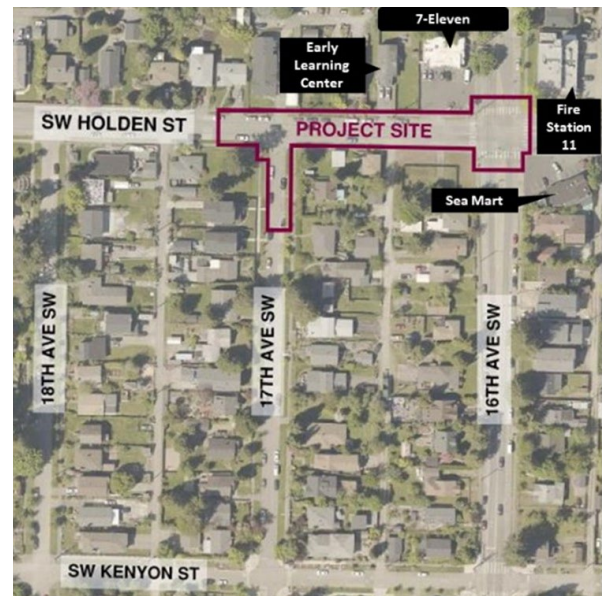
To address water quality in Longfellow Creek and Puget Sound, SPU is working to minimize pollution at its source by installing NDS. NDS consist of a series of cells, or shallow depressions, along a block designed to capture and slow stormwater, and filter pollutants before they can reach our waterways.

The project is part of the [Plan to Protect Seattle's Waterways](#), an initiative that aims to improve water quality by reducing polluted stormwater runoff.

Location

SPU is installing NDS on SW Holden Street between 16th Avenue SW and 17th Avenue SW and on the east side of 17th Avenue SW. This site was chosen from community feedback and in coordination between SPU and Seattle Department of Transportation (SDOT). The final project location will depend on factors such as:

- How much water can be treated
- Location of existing underground utilities
- Existing soil conditions
- Width of public right-of-way
- Presence of driveways
- Availability of off-street parking
- Potential impacts to mature trees
- Location of nearby steep slopes
- Cost of project construction and long-term operation and maintenance



Project Contact

Wan-Yee Kuo, Senior Project Manager | Wan-Yee.Kuo@seattle.gov | (206) 684-3957
www.seattle.gov/utilities/HoldenNDS



Benefits to the Community

- Stormwater/drainage water quality improvements
- Increased landscaping diversity and street trees
- Pedestrian safety improvements
- Roadway improvements
- Healthier creek ecosystems
- NDS will be maintained by SPU

Schedule

SPU is currently in the early design phase. We are gathering feedback from the community, permitting agencies, and other impacted parties to inform the project's design. As the design moves forward, we will provide a more precise project schedule. Outreach will be ongoing through the different project phases.

- 2022: Planning (completed)
- 2023-2024: Design
- 2024-2025: Construction

Stay Informed

SPU will provide regular updates as the project progresses. Learn more and sign up for the project email list by visiting:

www.seattle.gov/utilities/HoldenNDS

Questions? We want to hear from you! Contact Wan-Yee Kuo, Senior Project Manager, at Wan-Yee.Kuo@seattle.gov or (206) 684-3957.

Project Contact

Wan-Yee Kuo, Senior Project Manager | Wan-Yee.Kuo@seattle.gov | (206) 684-3957

www.seattle.gov/utilities/HoldenNDS



**Seattle
Public
Utilities**